



Employer: Project Management Unit (PMU)– Department of Tourism, Khyber Pakhtunkhwa
Country: Pakistan
Name of Project: Khyber Pakhtunkhwa Integrated Tourism Development Project (KITE)
Activity Reference No. PK-KP DOT-240014-CW-RFQ
Project ID. P163562
Credit No. IDA-64620

The Government of Khyber Pakhtunkhwa has received Credit from the International Development Association (IDA) of the World Bank Group for Khyber Pakhtunkhwa Integrated Tourism Development Project (KITE) and intends to apply part of the proceeds towards payments under the contract for Minor Civil Work for site Preparation for portable prefabricated toilets in various sites in Khyber Pakhtunkhwa through this Request for Quotations (RFQ).

The Project Management Unit (PMU) for KITE Project invites sealed quotations from eligible bidders for Minor Civil Work for site Preparation for portable prefabricated toilets in various sites in Khyber Pakhtunkhwa.

Distribution of Single unit PFT	Quantity	Distribution of 4-unit PFT	Quantity
Abbottabad	14	Abbottabad	4
Chitral	10	Chitral	2
Lower Dir	8	Lower Dir	2
Malakand	8	Malakand	3
Manshera	12	Manshera	2
Peshawar/Nowshera	4	Peshawar/Nowshera	1
Swat	10	Swat	3
Upper Dir	8	Upper Dir	3
Total	74	Total	20

You are requested to kindly provide your rates as per the Bill of Quantity (BoQs) attached:



Department of Tourism, Culture, Sports, Archaeology, Museums & Youth Affairs

BILL OF QUANTITIES (BOQ)

MINOR CIVIL WORK FOR SITE PREPARATION OF MALE & FEMALE (02)

UNITS FIBRE GLASS PORTABLE TOILETS

Item No	KPK MRS 2021 REF. No.	Description	Unit	QTY	Unit Rate (Rs.)	Total Amount
C-01	03-60	Clearance of site by cutting, removing all shrubs, trees, upto 6 inches (152 mm) girth, etc. and taking out their entire roots and filling the hollows with earth complete with dressing, consolidating and watering the filling including stacking the serviceable materials and disposal of useless material as directed, lead to 10 chains, cost of earth included.	m2	6.41		
C-02	03-03-h	Excavate Surplus Soft Rock Material	m3	5.21		
C-03	06-05-h	Plain cement concrete including placing, compaction, finishing and curing (Raio 1:3:6)	m3	4.60		
C-04	06-05-i	Plain cement concrete including placing, compaction, finishing and curing (Raio 1:4:8)	m3	2.11		
C-05	07-44-c	Solid Block Masonry in walls upto 20 feet height in 1:4 cement sand mortar using 16"x8"x6" factory manufactured solid blocks with strength of 1900 psi	m3	0.23		
C-06	11-09-c	Cement plaster 1:4 upto 20' height 3/4" thick	m2	3.53		
C-07	16-73-a	Providing and fixing kerb stone (12"x18"x6") in cement sand mortar 1:3 in centre media or roundabout as specified	m	13.41		
C-08	10-49-a	Providing and Fixing Precast Concrete 7000 psi TUFF Tiles 50 mm thick over bed of 2" thick sand & 4" thick brick ballast/stone ballast complete	m2	1.75		
C-09	03-67-d	Structural Backfill Using Granular Material brought from outside	m3	1.91		



Department of Tourism, Culture, Sports, Archaeology, Museums & Youth Affairs

C-10	04-19-b	Dismantling: Plain Cement Concrete 1:3:6	m3	0.28		
C-11	04-13	Dismantling brick work in lime or cement mortar	m2	0.32		
C-12	08-01-d-03	Random rubble masonry in foundn. & plinth in cement, sand mortar : Ratio 1:6	m3	1.91		
Total Amount						

BILL OF QUANTITIES (BOQ)

MINOR CIVIL WORK FOR SITE PREPARATION OF (04) UNITS FIBRE GLASS PORTABLE TOILETS

Item No	KPK MRS 2021 REF. No.	Description	Unit	QTY	Unit Rate (Rs.)	Total Amount
C-01	03-60	Clearance of site by cutting, removing all shrubs, trees, upto 6 inches (152 mm) girth, etc. and taking out their entire roots and filling the hollows with earth complete with dressing, consolidating and watering the filling including stacking the serviceable materials and disposal of useless material as directed, lead to 10 chains, cost of earth included.	m2	44.24		
C-02	03-03-h	Excavate Surplus Soft Rock Material	m3	4.14		
C-03	06-05-h	Plain Cement Concrete including placing, compacting, finishing & curing (Ratio 1:3:6)	m3	5.84		
C-04	06-05-i	Plain Cement Concrete including placing, compacting, finishing & curing (Ratio 1:4:8)	m3	2.75		
C-05	07-44-c	Solid Block Masonry in walls upto 20 feet height in 1:4 cement sand mortar using 16"x8"x6" factory manufactured solid blocks with strength of 1900 psi.	m3	0.23		
C-06	11-09-c	Cement plaster 1:4 upto 20' height 3/4" thick	m2	3.53		



C-07	16-73-a	Providing and Fixing Kerb stone (12"x18"6") in 1:3 CSM in center Media or round about as specified	m	18.29		
C-08	10-49-a	P/F Precast Concrete 7000 Psi Tuff Tiles 50 mm thick over beof 2" thick sand & 4" thick brick ballast/stone ballast complete	m2	6.35		
C-09	03-67-d	Structural Backfill using Granular Material brought from Outside	m3	5.73		
C-10	04-19-b	Dismantling : Plain Cement Concrete 1:3:6	m3	2.87		
C-11	04-13	Dismantling brick work in lime or cement mortar	m2	4.04		
C-12	08-01-d-03	Random rubble masonry in foundn. & plinth in cement, sand mortar : Ratio 1:6	m3	5.73		
Total Amount						

1. Following are the qualification criteria:

- (i) The bidders must be Sales Tax and Income Tax registered and must be on active Taxpayer list of FBR.
- (ii) Registration with Pakistan Engineering Council (PEC)
- (iii) Supplier/firm/Company shall have minimum of five (5) years of relevant experience. Should have a documented track of completing at least ten (10) assignments of similar nature. Satisfaction Certificates from the client is to be provided.
- (iv) The bidder must not be blacklisted by any Government/Semi Govt. organization in Pakistan and no litigation is under way by any organization.
- (v) Bid must be signed and stamped mentioning Delivery time.
- (vi) Amount of bid security shall be 2% in form of bank guarantee or CDR issued by a schedule bank in the name of Project Director PMU KITE DoT.
- (vii) Non-Compliance of any of the above will result in rejection of bid.
- (viii) The estimated quantities mentioned in the RFQ may be increase or decrease as per the requirement of the Project.

Interested eligible bidders may obtain further information and inspect the Request for Quotations (RFQ) documents during office hours **0900 to 1700 hours** at the address given below.

A complete set of Request for Quotations (RFQ) documents can be downloaded from the Khyber Pakhtunkhwa Tourism Department web site www.kptourism.com or requested by writing an email to the naemkhan@kptourism.com



GOVERNMENT
OF KHYBER
PAKHTUNKHWA

KHYBER PAKHTUNKHWA
**INTEGRATED TOURISM
DEVELOPMENT PROJECT (KITE)**
PROJECT MANAGEMENT UNIT (DoT)

Department of Tourism, Culture, Sports, Archaeology, Museums & Youth Affairs

Quotations must be delivered to the office address given below by or before **1400 hours** on **March 22, 2022** and will be opened on same day in the presence of bidders' representative who chooses to attend at 1430 hours at the address given.

The bidders are requested to give their best and final prices including all permissible taxes as no negotiations will be allowed at later stage. Incomplete and late bids will not be entertained.

**Project Director
PMU KITE DoT**

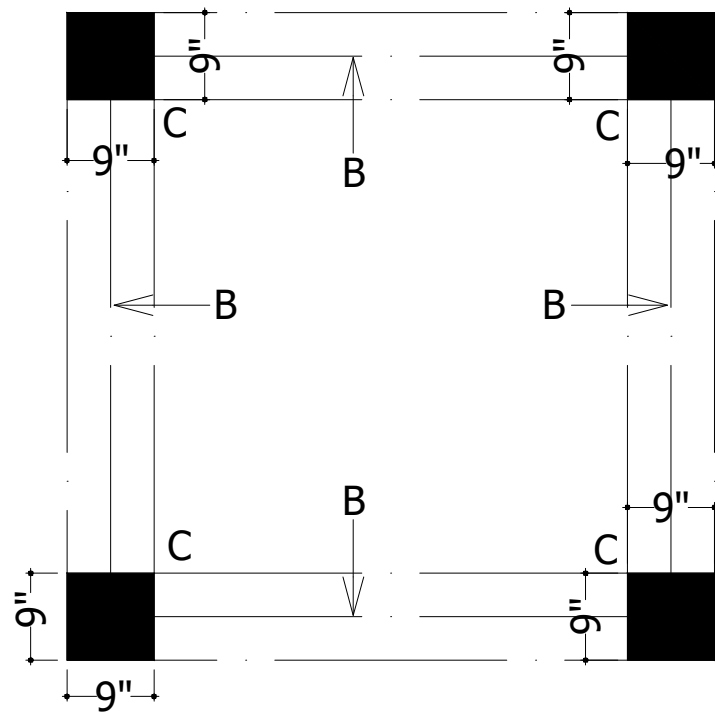
**House No. 20, Syed Jamal Uddin Afghani Road, University Town Peshawar, Khyber
Pakhtunkhwa Pakistan**

Phone No. +92 91 9216370-72 Fax No. +92 91 9216371

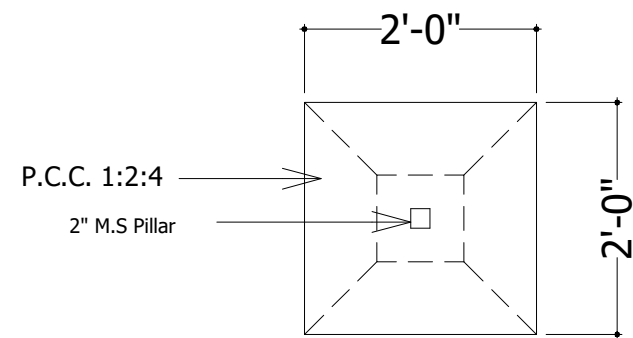
pdkite@kptourism.com, naeemkhan@kptourism.com

www.kptourism.com

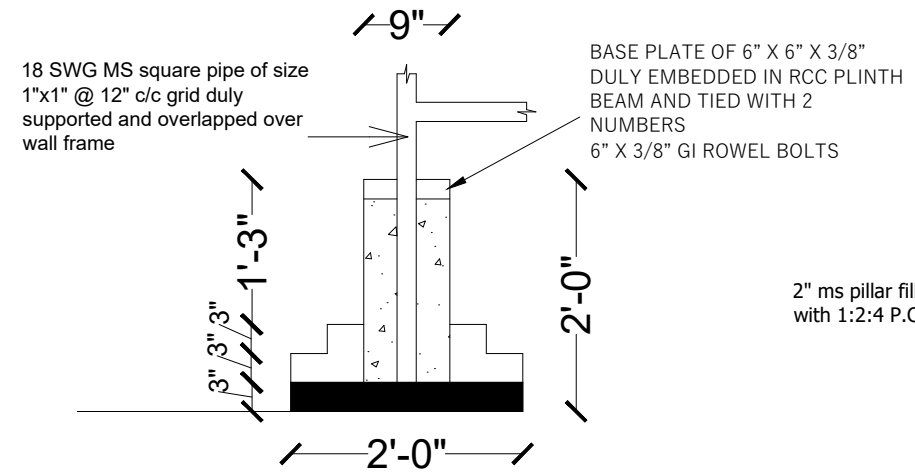
DETAIL A



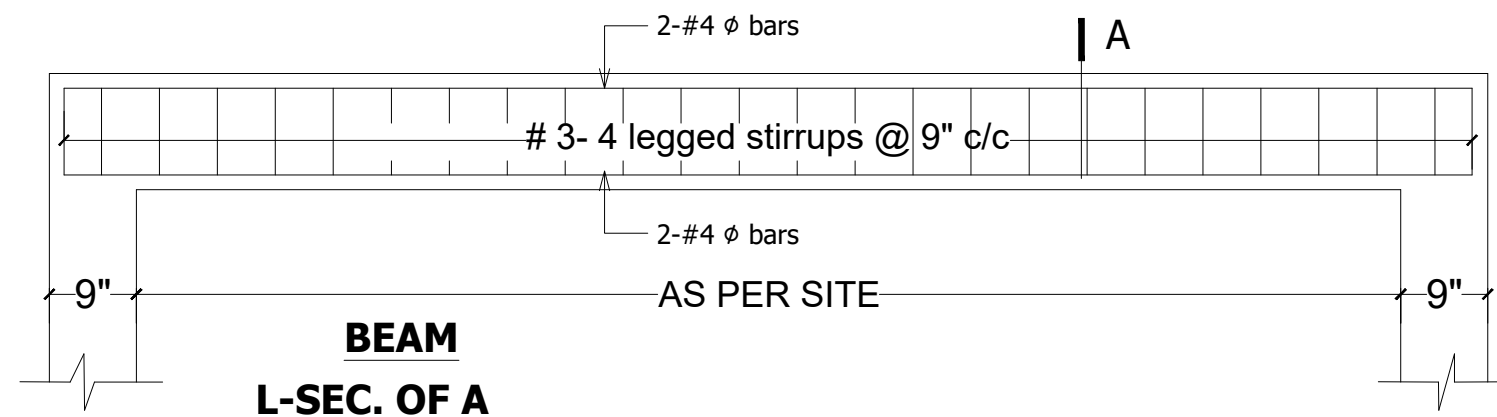
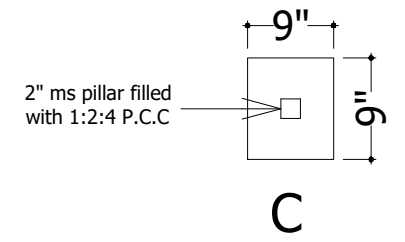
**BEAM & COLUMN
LAYOUT PLAN OF MALE &
FEMALE WASH ROOM**



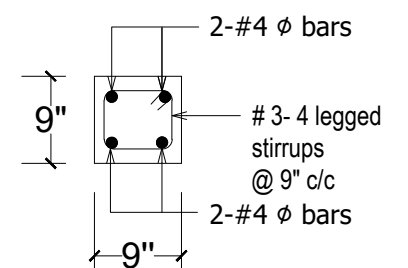
PLAN OF COLUMN C1



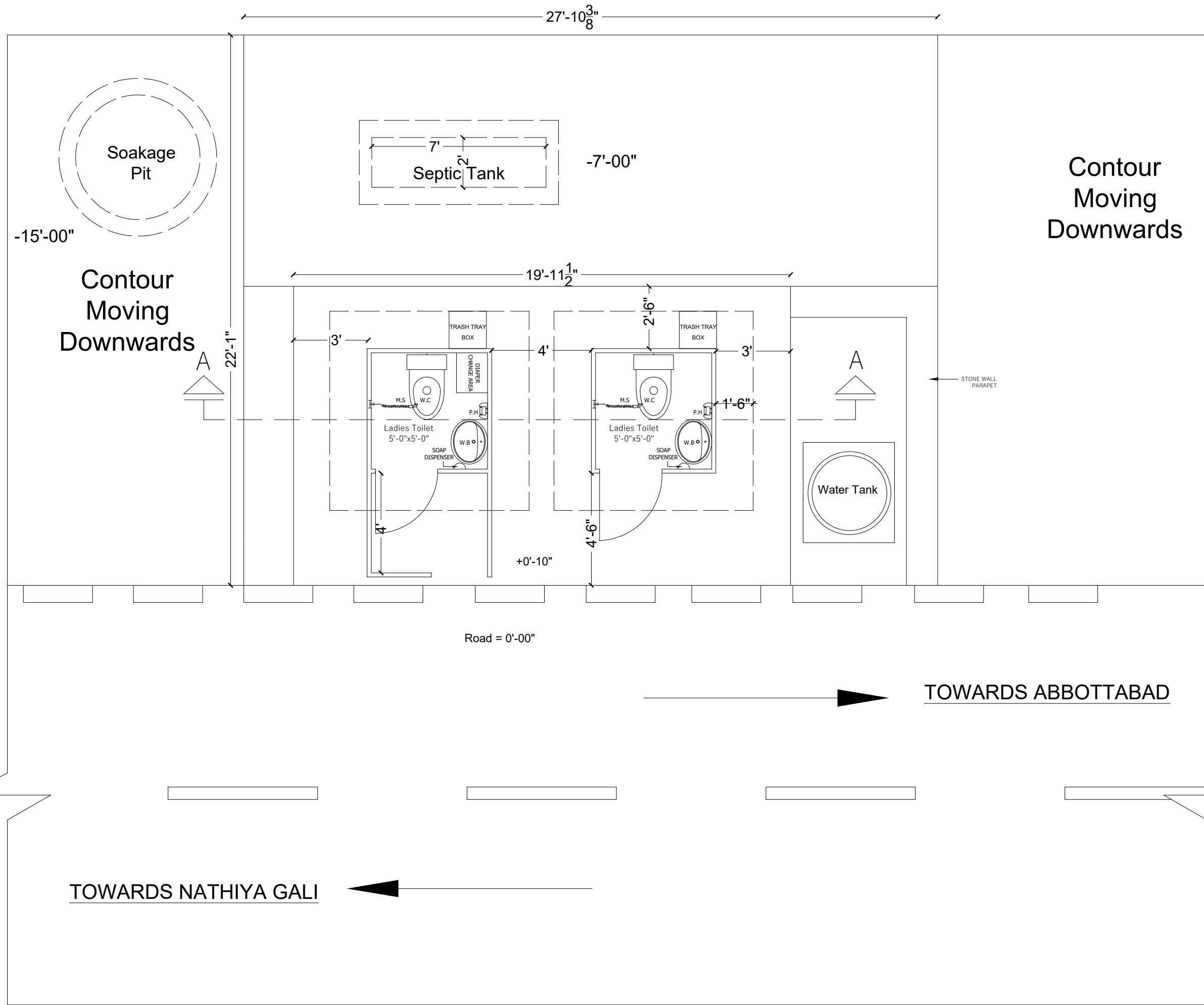
X-SECTION OF COLUMN C



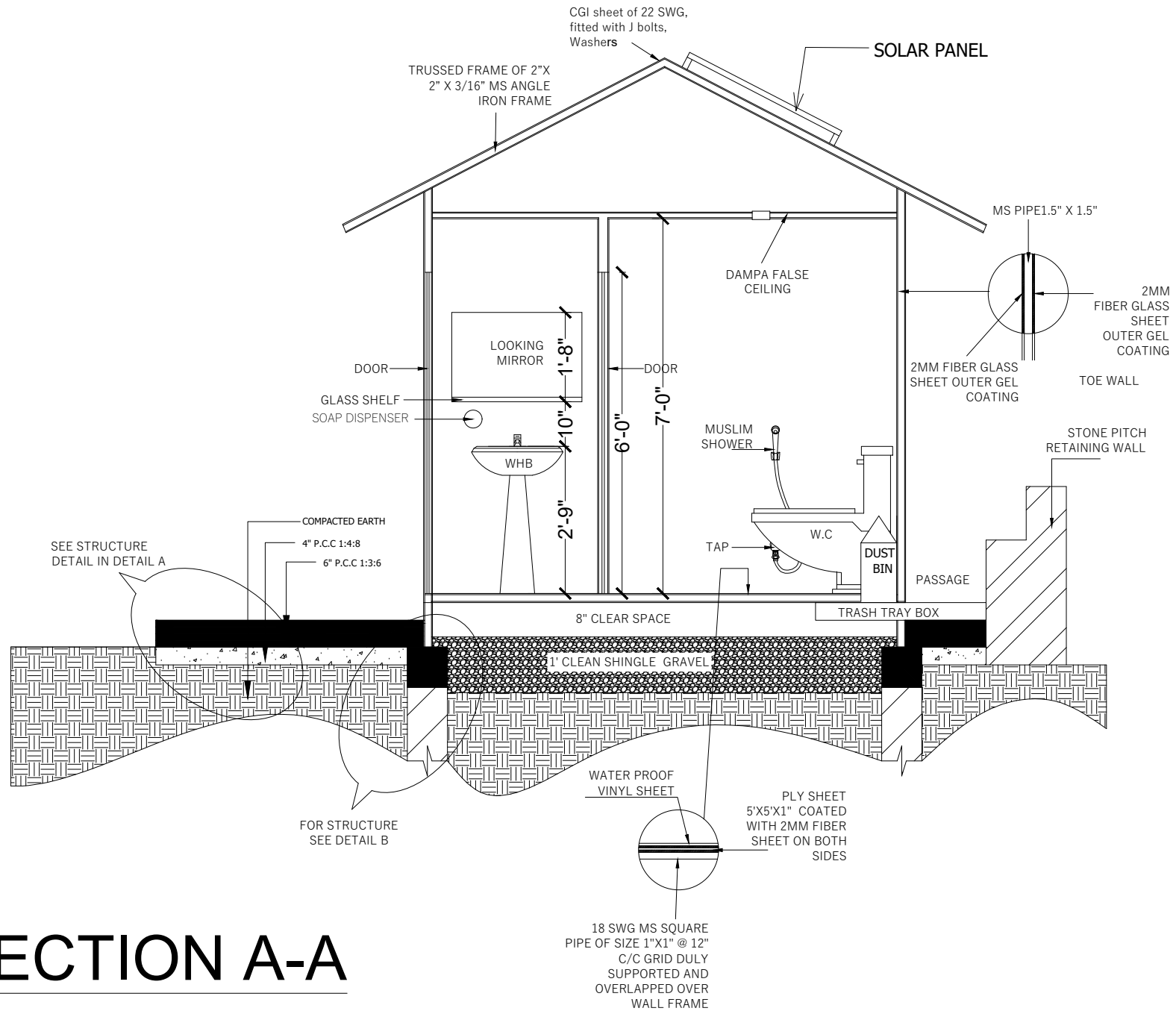
**BEAM
L-SEC. OF A**



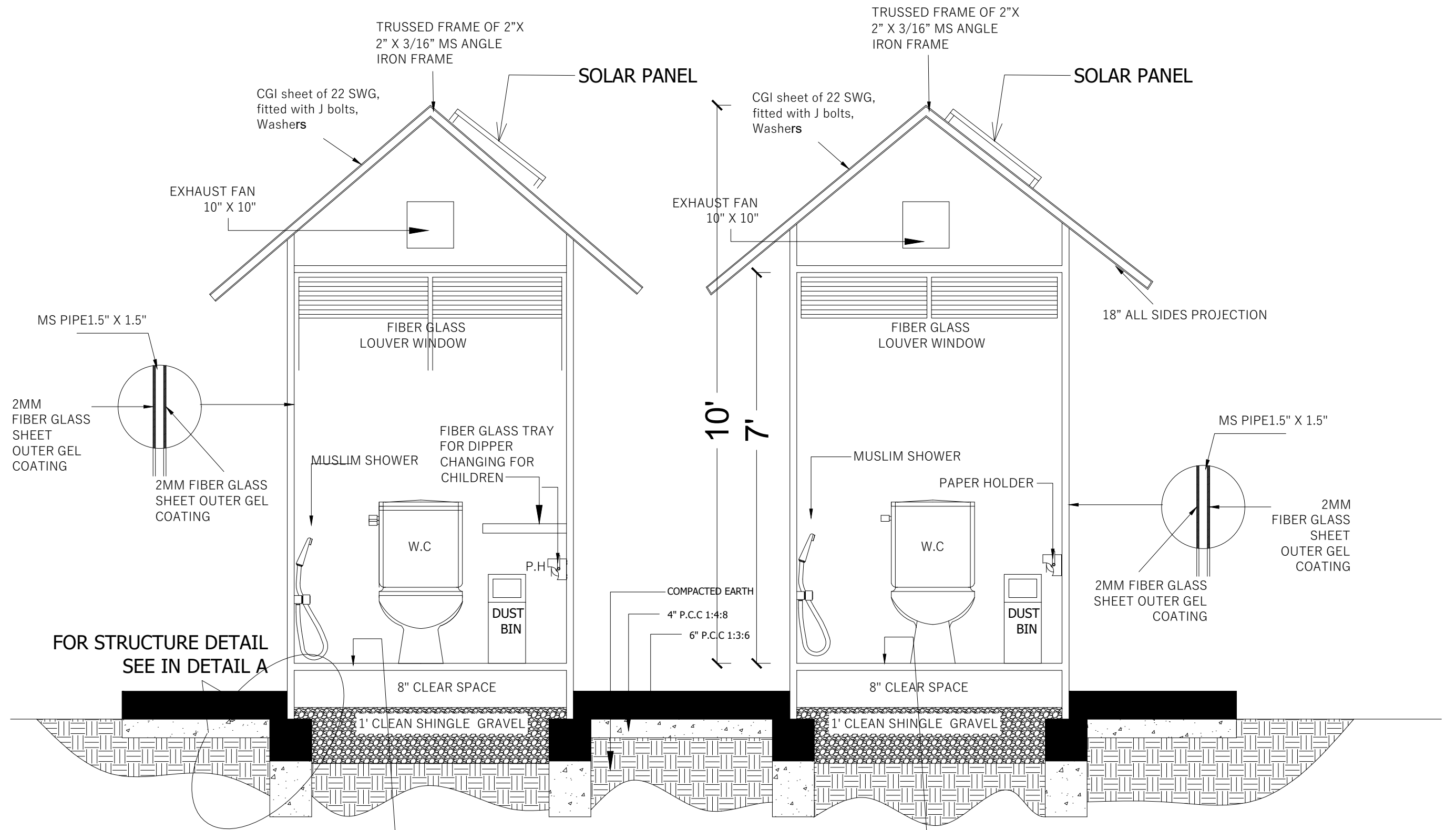
**BEAM
SECTION AT-A**



PLAN



SECTION A-A



SECTION A-A

PLY SHEET 5'X5'X1" COATED WITH 2MM FIBER SHEET ON BOTH SIDES

WATER PROOF VINYL SHEET

18 SWG MS SQUARE PIPE OF SIZE 1"X1" @ 12" C/C GRID DULY SUPPORTED AND OVERLAPPED OVER WALL FRAME

PLY SHEET 5'X5'X1" COATED WITH 2MM FIBER SHEET ON BOTH SIDES

WATER PROOF VINYL SHEET

18 SWG MS SQUARE PIPE OF SIZE 1"X1" @ 12" C/C GRID DULY SUPPORTED AND OVERLAPPED OVER WALL FRAME

FOR STRUCTURE DETAIL SEE IN DETAIL A

MS PIPE 1.5" X 1.5"

2MM FIBER GLASS SHEET OUTER GEL COATING

2MM FIBER GLASS SHEET OUTER GEL COATING

MS PIPE 1.5" X 1.5"

2MM FIBER GLASS SHEET OUTER GEL COATING

2MM FIBER GLASS SHEET OUTER GEL COATING

COMPACTED EARTH

4" P.C.C 1:4:8

6" P.C.C 1:3:6

TRUSSED FRAME OF 2" X 2" X 3/16" MS ANGLE IRON FRAME

CGI sheet of 22 SWG, fitted with J bolts, Washers

SOLAR PANEL

EXHAUST FAN 10" X 10"

FIBER GLASS LOUVER WINDOW

MUSLIM SHOWER

FIBER GLASS TRAY FOR DIPPER CHANGING FOR CHILDREN

W.C

P.H

DUST BIN

8" CLEAR SPACE

1' CLEAN SHINGLE GRAVEL

TRUSSED FRAME OF 2" X 2" X 3/16" MS ANGLE IRON FRAME

CGI sheet of 22 SWG, fitted with J bolts, Washers

SOLAR PANEL

EXHAUST FAN 10" X 10"

FIBER GLASS LOUVER WINDOW

MUSLIM SHOWER

PAPER HOLDER

W.C

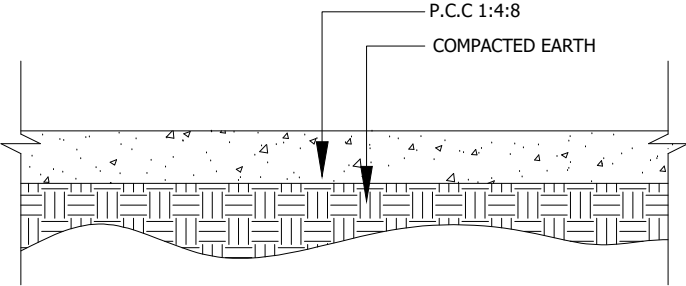
DUST BIN

8" CLEAR SPACE

1' CLEAN SHINGLE GRAVEL

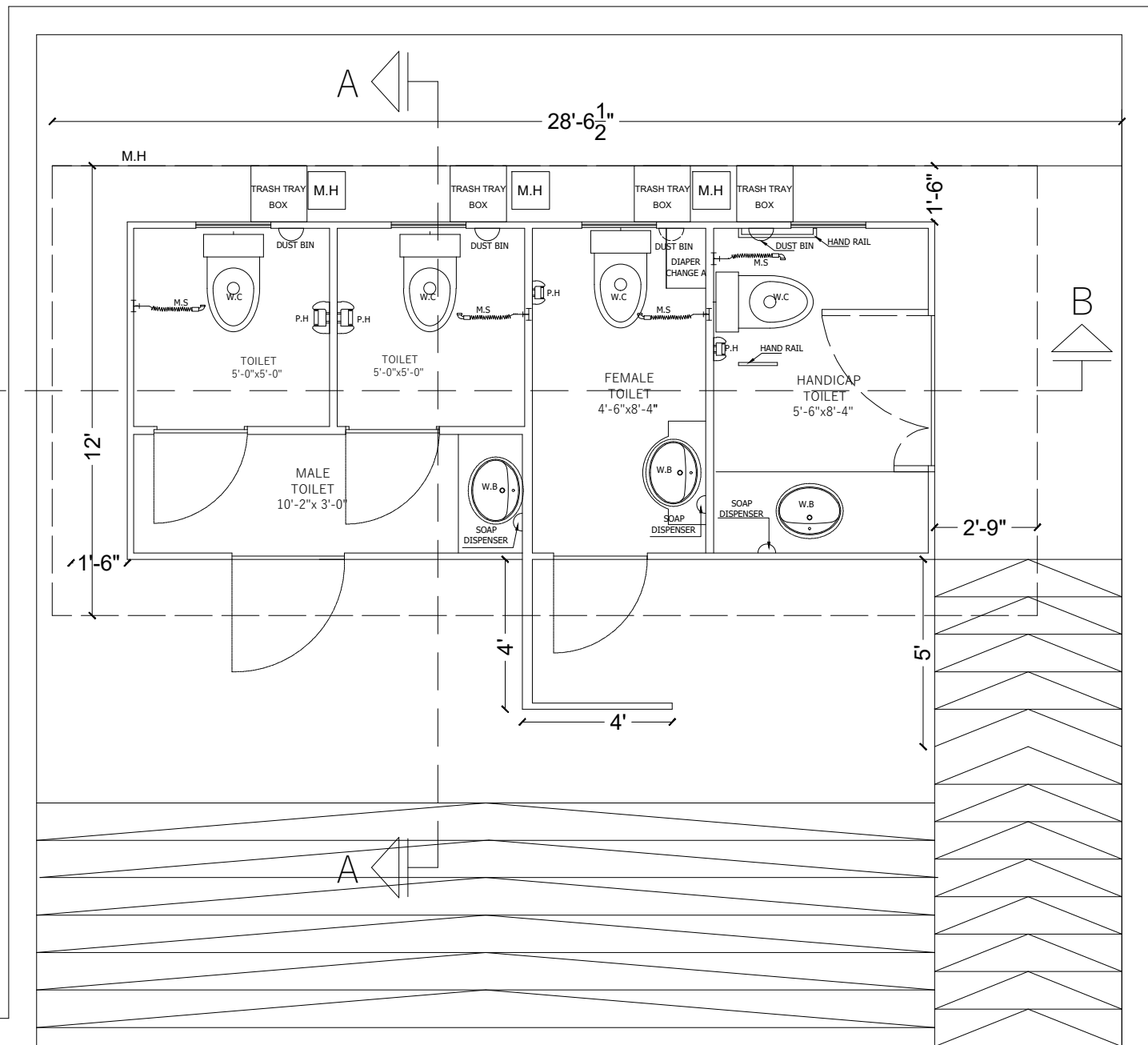
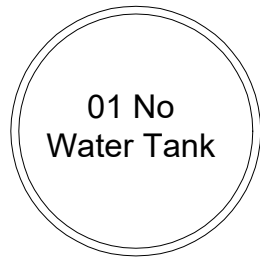
18" ALL SIDES PROJECTION

DETAIL A

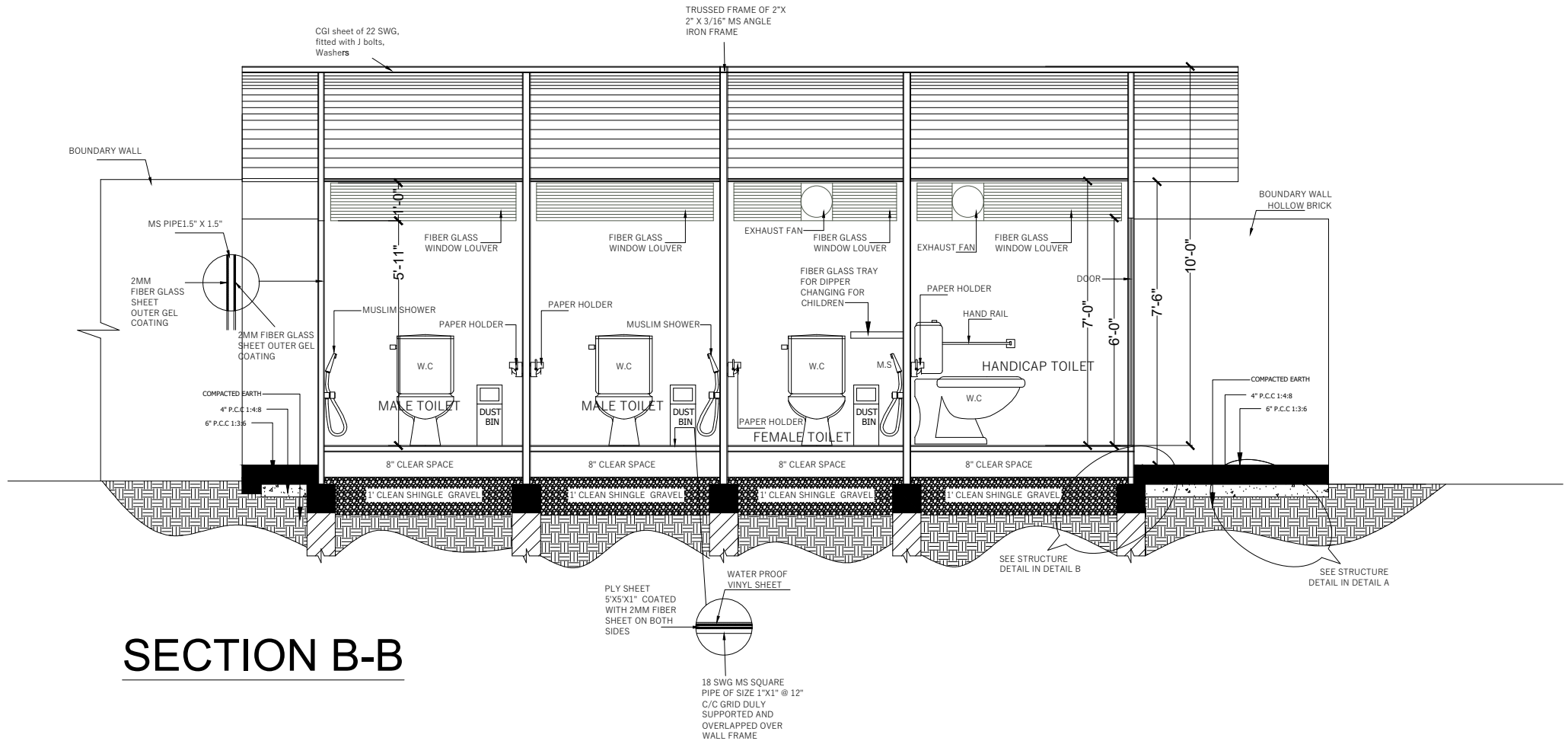


DETAIL A

EXISTING
BUILDING

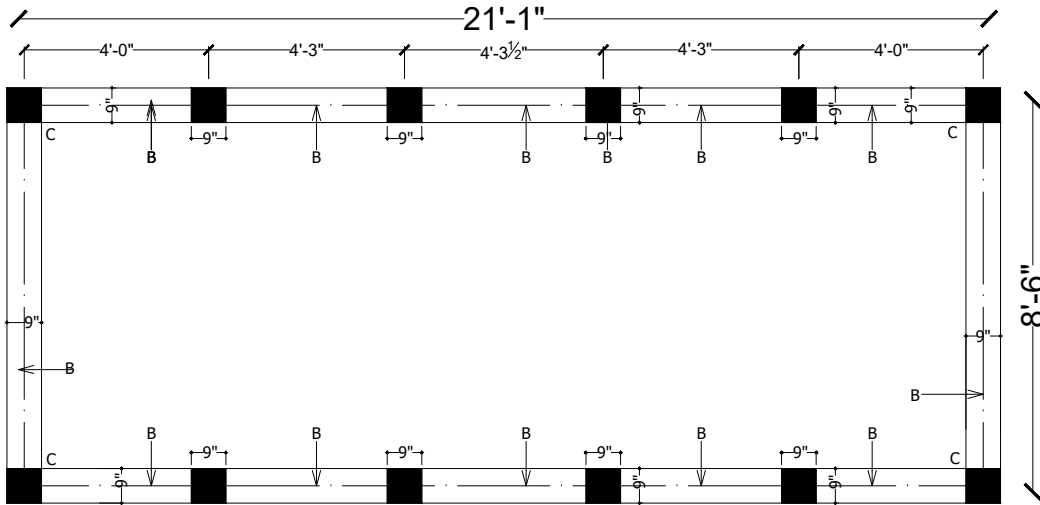


MAIN ROAD



SECTION B-B

DETAIL D



**BEAM & COLUMN
LAYOUT PLAN OF H. WASH ROOM**

